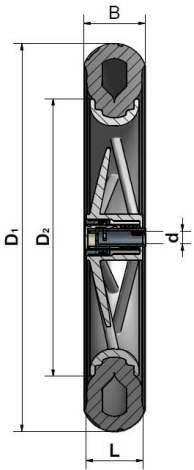
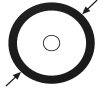

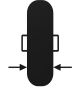
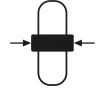




X1203



Art. No.	 Diameter D1	 Diameter D2	 Tyre width B	 Hub length L	 Axial dimension d	Tyre tread	Fastener	 Load capacity
X1203-220/305/48	305 mm	220 mm	48 mm	45 mm	10 mm	motorbike-design	push button	35 kg
X1203-220/305/48	305 mm	220 mm	48 mm	45 mm	10 mm	motorbike-design	spring cap	35 kg
X1203-220/305/48	305 mm	220 mm	48 mm	45 mm	10 mm	motorbike-design	bush	35 kg
X1203-220/303/52	303 mm	220 mm	52 mm	45 mm	10 mm	cross-tyre	push button	35 kg
X1203-220/303/52	303 mm	220 mm	52 mm	45 mm	10 mm	cross-tyre	spring cap	35 kg
X1203-220/303/52	303 mm	220 mm	52 mm	45 mm	10 mm	cross-tyre	bush	35 kg
X1203-220/300/50	300 mm	220 mm	50 mm	45 mm	10 mm	Stollenreifen	push button	35 kg
X1203-220/300/50	300 mm	220 mm	50 mm	45 mm	10 mm	Stollenreifen	spring cap	35 kg
X1203-220/300/50	300 mm	220 mm	50 mm	45 mm	10 mm	Stollenreifen	bush	35 kg

Colour - rim: silver (standard), special colours on request.

Colour - tyre: black (standard), special colours on request.

Colour - fastener: black (standard), special colours on request.

Material - rim: PP

Material - tyre: EVA

Material - fastener: PA 6.6

Alternative tyre treads:



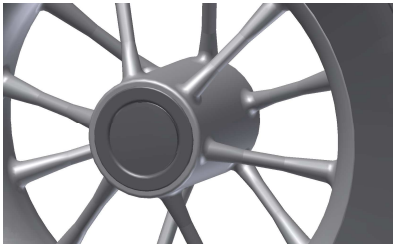
cross-tyre



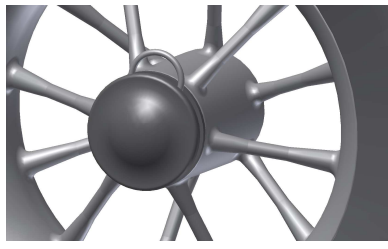
Stollenreifen

Alternative tyre treads on request.

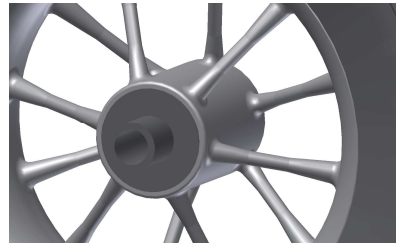
Fasteners:



push button (standard)



spring cap



bush

Alternative fasteners on request.