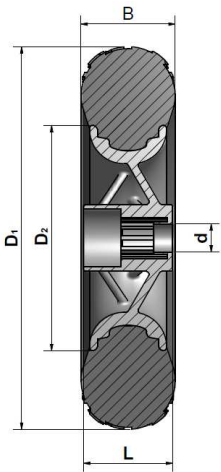
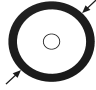

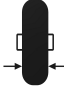
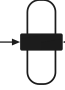




X1201

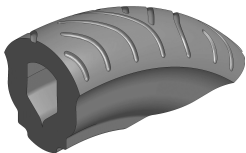


Art. No.	 Diameter D1	 Diameter D2	 Tyre width B	 Hub length L	 Axial dimension d	Tyre tread	Fastener	 Load capacity
X1201-113/190/47	190 mm	113 mm	47 mm	42 mm	10 mm	cross-tyre	push button	30 kg
X1201-113/190/47	190 mm	113 mm	47 mm	42 mm	10 mm	cross-tyre	spring cap	30 kg
X1201-113/190/47	190 mm	113 mm	47 mm	42 mm	10 mm	cross-tyre	bush	30 kg
X1201-113/197/48	197 mm	113 mm	48 mm	42 mm	10 mm	motorbike-design	push button	30 kg
X1201-113/197/48	197 mm	113 mm	48 mm	42 mm	10 mm	motorbike-design	spring cap	30 kg
X1201-113/197/48	197 mm	113 mm	48mm	42 mm	10 mm	motorbike-design	bush	30 kg

Colour - rim: silver (standard), special colours on request.
Colour - tyre: black (standard), special colours on request.
Colour - fastener: silver/black (standard), special colours on request.

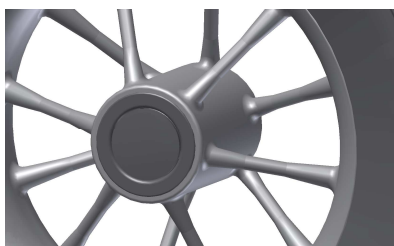
Material - rim: PP
Material - tyre: EVA
Material - fastener: PA 6.6

Alternative tyre treads:

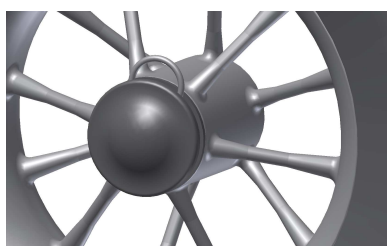


Motorrad-design

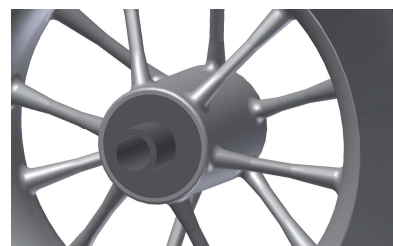
Fasteners:



push button (standard)



spring cap



bush

Alternative fasteners on request.