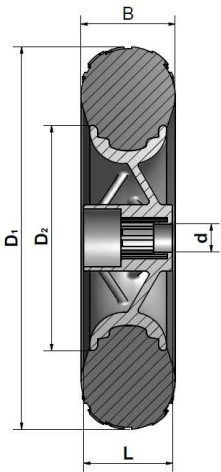
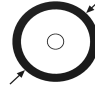

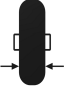
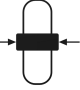




## X1201

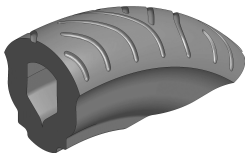


Art.-Nr.	 Durchmesser D1	 Durchmesser D2	 Reifenbreite B	 Nabenlänge L	 Achsmaß d	Reifenprofil	Verschluss	 Tragkraft
X1201-113/190/47	190 mm	113 mm	47 mm	42 mm	10 mm	Crossreifen	Druckknopf	30 kg
X1201-113/190/47	190 mm	113 mm	47 mm	42 mm	10 mm	Crossreifen	Federverschluss	30 kg
X1201-113/190/47	190 mm	113 mm	47 mm	42 mm	10 mm	Crossreifen	Buchse	30 kg
X1201-113/197/48	197 mm	113 mm	48 mm	42 mm	10 mm	Motorraddesign	Druckknopf	30 kg
X1201-113/197/48	197 mm	113 mm	48 mm	42 mm	10 mm	Motorraddesign	Federverschluss	30 kg
X1201-113/197/48	197 mm	113 mm	48 mm	42 mm	10 mm	Motorraddesign	Buchse	30 kg

**Farbe Felge:** silber (Standard), Sonderfarben auf Anfrage.  
**Farbe Reifen:** schwarz (Standard), Sonderfarben auf Anfrage.  
**Farbe Verschluss:** silber/schwarz (Standard), Sonderfarben auf Anfrage.

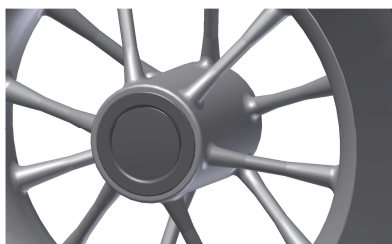
**Material Felge:** PA  
**Material Reifen:** EVA  
**Material Verschluss:** PA 6.6

### Alternative Reifenprofile:

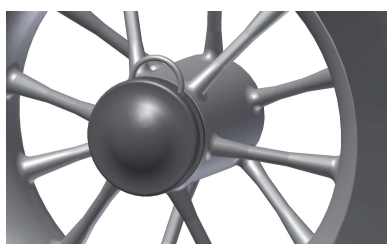


Motorraddesign

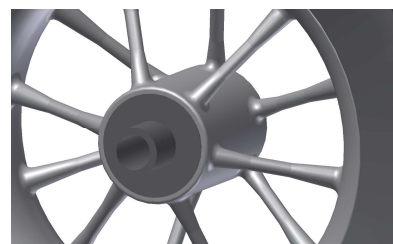
### Verschlussysteme:



Druckknopfverschluss (Standard)



Federverschluss



Buchse

Weitere Verschlussysteme auf Anfrage.